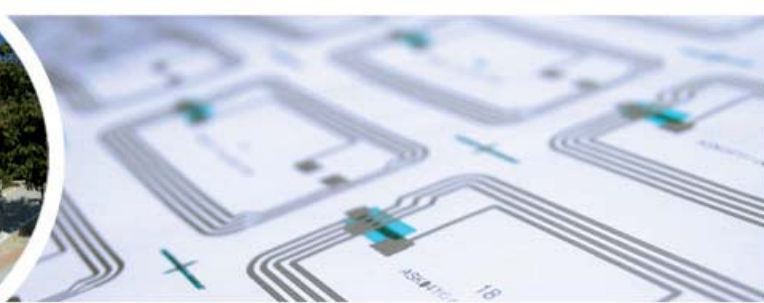
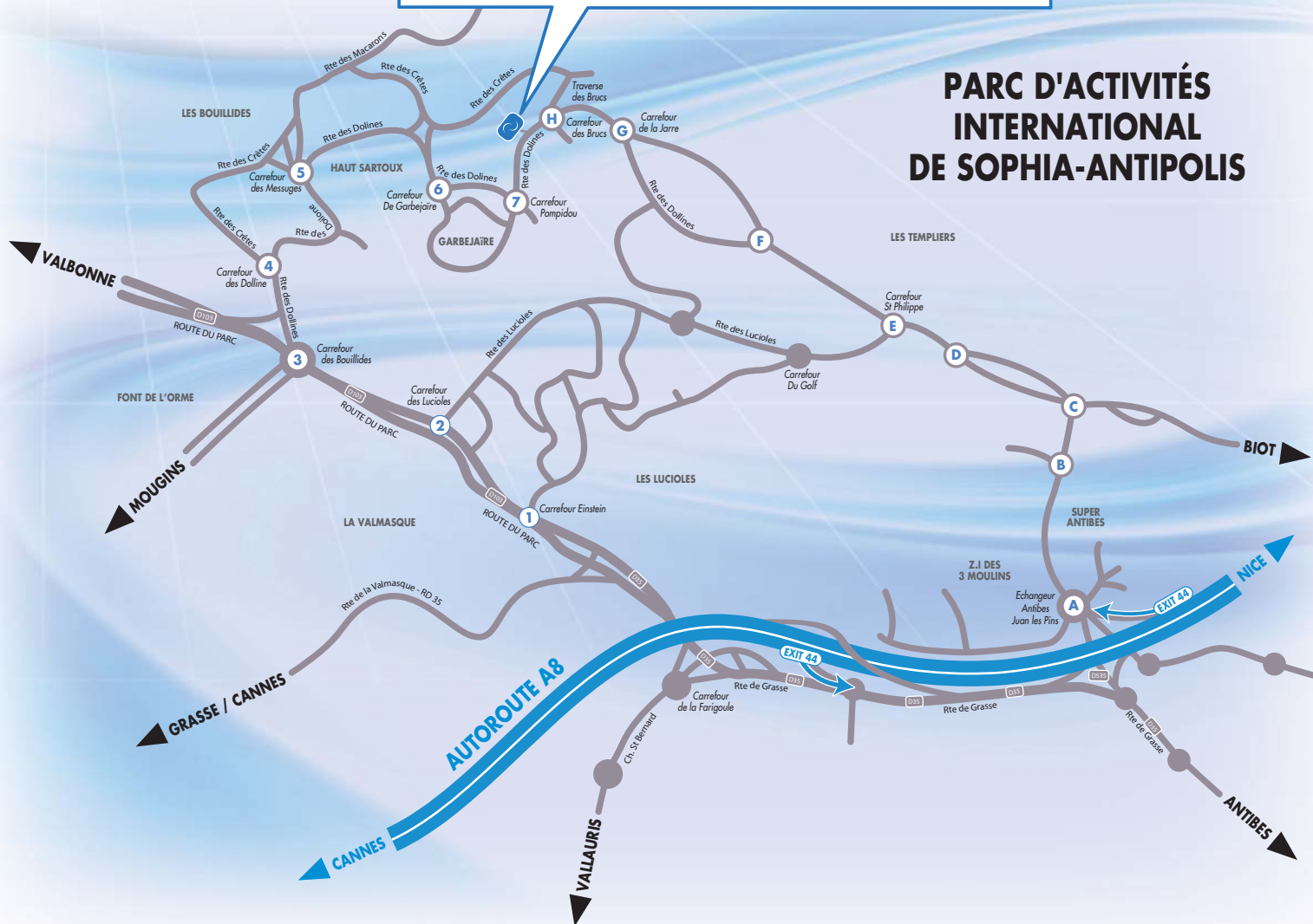


YOUR BEST CONTACT
IN CONTACTLESS




2405 route des Dolines 12 06560 Sophia Antipolis
GPS : Latitude : 43.6259986 - Longitude : 7.0508347


PARC D'ACTIVITÉS INTERNATIONAL DE SOPHIA-ANTIPOLIS



DIRECTIONS FROM CANNES / AIX-EN-PROVENCE

- > Take the highway A8 Antibes.Cannes
- > **EXIT 44** Antibes, Sophia-Antipolis
- > Then direction D35, Sophia-Antipolis
- > Then direction D103, route du parc, Les Bouillides
- 1** Roundabout Einstein: direction D103, Les Bouillides
- 2** Roundabout Lucioles: direction D103, Les Bouillides
- 3** Roundabout Les Chapes: direction D504, Les Bouillides
- 4** Roundabout Les Dolines: direction D98, Gare routière
- 5** Roundabout Les Messuges: direction D98, Garbejaire
- 6** Roundabout Garbejaire: take direction D98, Garbejaire
- 7** Roundabout Pompidou: take direction D98, La Poste Entreprise, Route des Dolines
-  «DRAKKAR building», please park at the visitors parking lot in front of building A (Astek), go beyond the barrier on your right and follow ASK signs.

DIRECTIONS FROM NICE

- > Take the highway A8 Antibes.Cannes
- > **EXIT 44** Antibes, Sophia-Antipolis
- A** At the first roundabout, direction D535.
- B** At the second roundabout, direction D535, Les Bouillides
- C** Roundabout Les Chapes: take direction D504, Les Bouillides
- D** Roundabout St Philippe: take direction D504, Les Bouillides
- E** Roundabout Du Golf: take direction D98, Les Bouillides
- F** Roundabout Eganaude: take direction D98, Sophia country club then straight ahead until the roundabout with a jar in the middle
- G** Roundabout La Jarre: take direction D98, Garbejaire
- H** Roundabout Les Brucs: take direction Garbejaire, Route des Dolines
-  «DRAKKAR building», please park at the visitors parking lot in front of building A (Astek), go beyond the barrier on your right and follow ASK signs.